



# ChiroDesign Group

The One Stop Shop For All Chiropractors

ATION **SPACE PLANNING** EXTERNAL MARKETING  
OFFICE DESIGN PEDIATRIC TABLES BILATERAL  
CARRYING BLOCKS **INTERIOR DESIGN** OFFICE  
X-RAY STATIONS MODULAR DESKS PRES  
CKS **CUSTOM FURNITURE** EXTERNAL MARKETING  
POSTURAL ANALYSIS X-RAY EDUCATION POS  
BOOTH **PRODUCT SALES** MODULAR RECEP



Catalogue

## ChiroDesign Group

www.chirodesigngroup.com

office

512.301.0821

facsimile

214.823.2416

DESKS PROMO SCREENS BILATERAL S  
AR FURNITURE **PATIENT EDUCATION** OFFI  
ING TABLES PORTABLE CARTS SPINAL M  
S **TRACTION UNITS** COMPUTER STATIONS  
S WAITING ROOMS SPINAL MOLDING BLO  
FFICIENCY DESIGN **BILATERAL SCALES** PO  
ATION TOOLS PROFESSIONAL SCREENING



### ChiroDesign Group would like to introduce ourselves as your One Stop Shop for all of your chiropractic needs.

Starting from a concept or redesigning an existing clinic, while exciting, can also be a very intense and stressful progression. Let us work with you to find a clear and focused approach, and our expertise will guide the way to a stress-free process.

And we're there to guide you through the whole process. We handle the planning, designing, and furniture customization down to the very last detail. We also provide all the necessities including chiropractic tables, exam tools, bi-lateral scales and traction units.

Through our knowledge and expertise we will help you build a welcoming, healthy environment that allows you and your employees to be efficient while also inviting your current and future patients to frequent your clinic.



## Postural Analysis Screening System - P.A.S.S.™

**P.A.S.S.™ means immediate portability \$1,689**

Designed to allow for single person transport and setup. P.A.S.S.™ requires no assembly or disassembly. Approaching the design through 5th % ergonomic guidelines yielded a unit with advantages over all other Postural Analysis Screening Systems. A Doctor of Chiropractic or their Staff can transport and setup the unit without the aid of additional personnel.



## The Bilateral Station & Scale Kit

The Bilateral Station has a Digital Scale System, which is mounted in the case for protection. The scales will automatically self lock and remain locked until weight bearing is removed. A patient can look down, turn left and right to visually see the difference in weight bearing. A solar cell power system means never worrying about battery replacement. The Insta-Cell design, fully powers after only 10 seconds of full light exposure. Both units come with a 30 day money back guarantee and a 1 year parts and labor warranty.



**Bilateral Station \$447**

- Unlimited Uses and Self-Contained
- In Office Or Out Of Office Analysis Tool
- Brief Case Style Portable
- 28 x 20 x 2 Overall Size



**Bilateral Scale Kit \$225**

- Unlimited Uses
- In Office Analysis Tool
- Light Weight Durable Construction

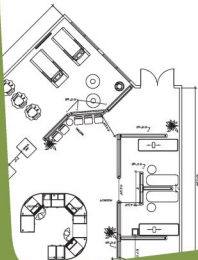
How do you minimize your overhead and maximize your billable square footage ?

With ChiroDesign Group's proficient Space Planning.



Whether you're just starting your practice or you're remodeling, downsizing, expanding, moving locations, or just freshening up the look our team is here to work with you to ensure that your interior is perfect for your practice.

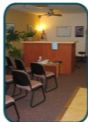
We can help provide you with a more pleasing work environment for your employees, as well as a welcoming atmosphere for your patients.



**Starting at \$688 up to 2000 sq.ft.**  
Includes four revisions of same floor plan

## Color. Quality. Style. Strategic planning.

There are endless aspects to design. The right combination can captivate, comfort, facilitate and inspire. More importantly, the right design team can help generate more revenue for you.



“Thank you very much for designing the practice of my dreams. Your professionalism and expertise went beyond my expectations. From day one, to this day, you have been willing and able to assist me throughout the process of opening my clinic.

I would highly recommend you to anyone opening an office or remodeling an existing.”

-Dr. Alan Rosenthal

Newbury Park, CA

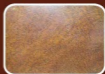


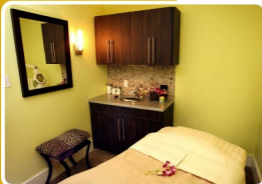
We'll select options that match your style, and create a warm and inviting environment for your patients.



We will **ENHANCE**  
the ideas you have  
and inspire new  
ideas along the way.

We are experts at listening to your concept  
and interpreting it through every detail.  
Including the lighting, flooring, paint,  
decorative accents and furniture.





If you can dream it...  
...we can build it.

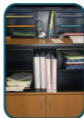


“ChiroDesign Group perfectly customized furniture that is tailored to our every need. Our office staff loves it because they are comfortable and more efficient, and our patients love coming back to see us.”

**-Dr. Henry Wong**

San Diego, California

With furniture from ChiroDesign Group you don't have to worry about those extra nuts and bolts. Our furniture is shipped assembled.



## STREAMLINE™ your office with our dynamic custom furniture.



The core advantage of these systems is that they can be easily installed and reconfigured. Imagine incorporating paperless sign in systems, travel card trays, monitor cut outs, hidden keyboard trays, printer pull outs, file drawers, storage cabinets, document slots and hidden cable management.



### WE BUILD EACH DESK TO FIT YOUR SPECIFIC NEEDS.

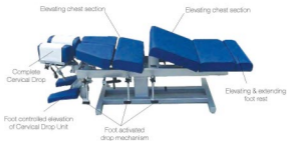
The front desk system is the most critical part of a chiropractic office, let us help you in perfecting this significant detail.



We strive to provide the lowest pricing in our industry.  
Contact our team today for a quote.

(512) 301-0821

## OMNI Tables



**Deluxe Omni Elevation \$6495**

With Air Drop **\$7995**

With Silent Air Compressor **\$8895**



**Omni Flexion Table**

Stationary Table **\$6395**

Elevation Table **\$7895**



**Stationary Omni \$4995**



## Reconditioned Tables

ChiroDesign has a wide variety of reconditioned tables available.

Please call our office for specific availability and pricing.



Spinal Intersegmental



Zenith Cox



Zenith 210

## Lloyd Tables



402 Elevation \$3950



402 Stationary \$1850



Galaxy Hy/Lo \$8025



402 Flexion Elevation \$5150



402 Flexion Stationary \$3900



Cosmic III \$2250



Exam & Treatment Table \$495

### Call for a complete brochure

All pricing listed is "base pricing." ChiroDesign Group offers all Lloyd Tables. Only selected tables are pictured above. Pricing subject to change without notice.

## Pediatric Tables



### Elephant Table

Three heights: 26", 28", 30" Leg extension, Pelvic drop section, Kids ladder, Nose up or down

Starting at \$995

## Whole Body Vibration

### PowerVibe Balance 1 ~ elliptical vibration

The PowerVibe Balance I uses elliptical vibration for maximum balance, stability, and rehabilitation.

The Balance I is constructed with an all steel frame. Wheels on the back make the WBV machine easy to move. The easy to use controls let you focus on training your balance

**\$1,395**



### PowerVibe Motion 1 ~ oscillating vibration

The PowerVibe Motion I uses oscillating vibration for maximum core strengthening and fat loss.

The Motion I is constructed with an all steel frame. Wheels on the back make the WBV machine easy to move. The easy to use controls let you focus on increasing mobility and strength.

**\$1,995**



### PowerVibe Pro 1 ~ vertical vibration

The PowerVibe Pro I is the perfect unit for your home. The Pro 1 uses vertical vibration for maximum muscle toning, lymph drainage, and flexibility.

The Pro I is constructed with an all steel frame and high-grade ABS outer shell. Wheels on the back make the WBV machine easy to move. The easy to use controls let you focus on gaining strength and flexibility.

**\$999**



### PowerVibe Zen Pro 5900

The PowerVibe Zen Pro 5900 uses vertical vibration for maximum muscle toning, lymph drainage, and flexibility.

The Zen Pro is constructed with an all steel, heavy-duty frame. It is a clinical Grade work horse. The personal coach in the control panel lets you focus on gaining strength and flexibility exactly where you want to.

**10 minutes with the Zen Pro® is equivalent to 45-60 minutes of conventional training**

**\$2,495**



*User Friendly Built-In Trainer.  
Easy to Use, No Learning Curve!*

**Free your patients of Weights, Harnesses and Hassles.**

Multiple models allow the Chiropractor to custom tailor the Cervical Traction System to the patients' requirements. Based on the Chiropractic diagnosis, patients of medium or good compliancy can utilize these systems for Compression Extension Tractioning.

*\*Quantity Discounts at 10 or more save \$1 per system. Not to be used without the direction of a Doctor/Practitioner.*


**NEW! LifeCurve Roll**

Made of polyethylene cross link foam, this product is simple and convenient for your patient to utilize and allows for easy use and portability. (Box of 10)

**\$195**

**"C.R.S." Cervical Restoration System Traction Model**

Engineered to ease a patient into Compression Extension Tractioning. A Thoracic curve supports the upper spine and reduces the intensity of cervical force for patients of medium compliancy to Compression Extension Tractioning.



**\$32/\$33\***


**The "Ergo" Cervical Traction Model**

A model for patients with previous experience in Compression Extension Tractioning. This model is intended for patients with good compliancy or minimum curve degeneration.

**\$32/\$33\***

**"Dynamic" Traction Model**

A dynamic traction system designed to offer patients the ability to increase or decrease tractioning forces by a simple movement of their leg. Results can be achieved at your own pace due to the dynamic design.



**\$32/\$33\***


**"A.R.C." Traction System Model**

A velcro head strap makes it simple to get in and out of, and the thick forehead pad provides maximum comfort. Three different settings allow for varying sizes of patients & the amount of tension that can be applied.

**\$56/\$58\***


**Spinal Molding Blocks**

These blocks can be used in the office or can be purchased by the patients for in home usage.

Half Round **\$12/\$14\***

Trapezoid **\$12/\$14\***